

EPSON V7xx V8xx PRO KAMI DIRECTIONS



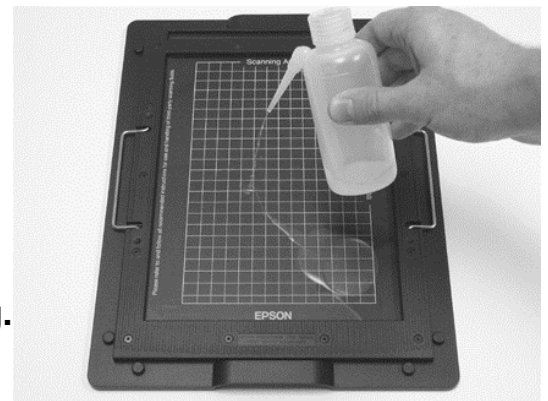
Items you will need:

1. EPSON Mounting Station and Bed
2. KAMI Mounting Fluid
3. AZ-42 Optical Mylar
4. Scanner Wipes
5. Application Bottle
6. KAMI Tape



1. With KAMI SMF Mounting Fluid in the Application Bottle lightly spray the area of the holder where the film will be placed.

*The right amount of KAMI should just be enough to keep film & glass from touching.



2. Place film on top of the KAMI applied area and align with grid in Mounting Station.



3. Now with KAMI SMF Mounting Fluid in the Application Bottle lightly spray the area on top of the film.

*The right amount of KAMI should just be enough to cover the top of film.



4. Take a pre-cut sheet of AZ-42 Optical Mylar and roll from left to right over the Mounting Bed.

*The AZ-42 Mylar can be used multiple times in one scanning session. After scanning session is over throw sheet away.



5. Air Bubbles should not be present in the image area. If air is present take a Scanner Wipe and wipe the AZ-42 to remove bubbles.

Air is okay under the Mylar; we just don't want air above or below the film.



6. Take the bed out of the mounting station and start scanning.

Note: KAMI Tape can be used to seal the edges of the Mylar. If the bed will be in the scanner longer than three to four hours sealing the Mylar may keep it from evaporating. KAMI Tape can also be used in the mounting of damaged film that has been bent or cut.

Cleanup: A glass cleaner (Preferably with No Ammonia) can be used to clean glass surfaces between mountings. Be careful that glass cleaners do not come in contact with your film.



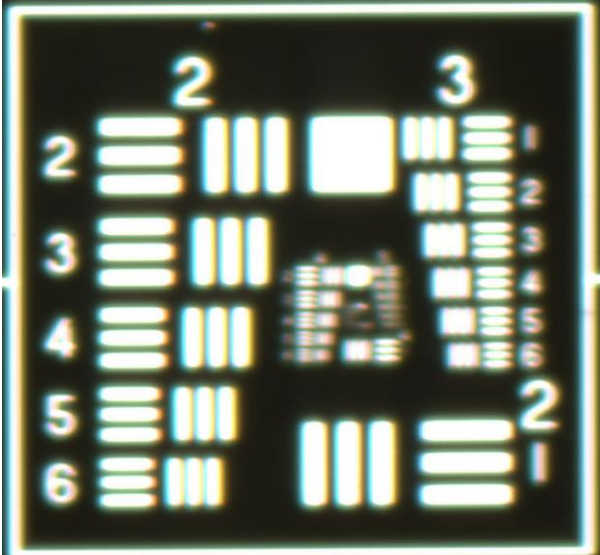
EPSON – KAMI KIT –Optional Epson Holder and CONSUMABLES CAN BE OBTAINED THROUGH AZTEK.

To place an order please call 949-770-8787

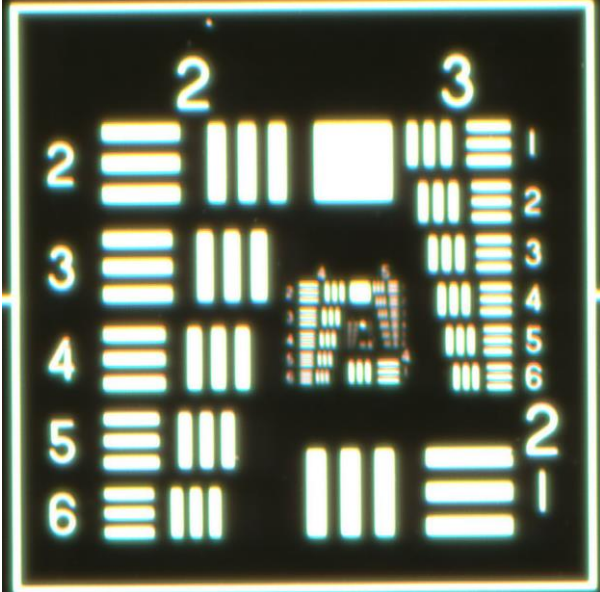
www.aztek.com

EPSON V750 PRO Performance Example

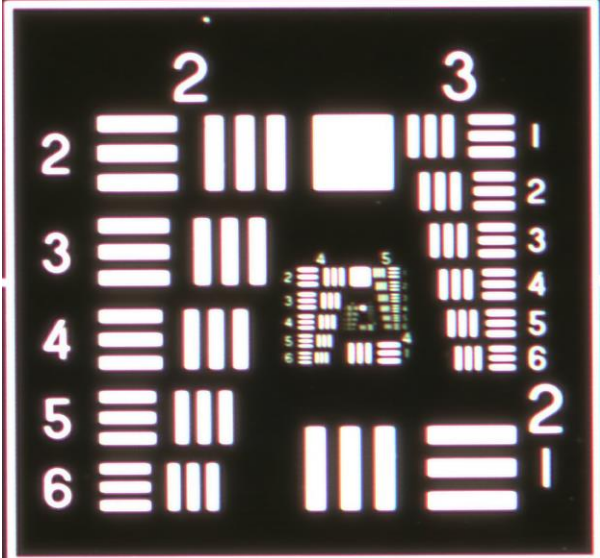
The following is a 1951 Air Force Resolution Film - Test Target.
The target has been scanned at the highest resolution twice with
KAMI and with the Epson Provided Film Holder.



◀EPSON provided Film Holder
(No Optical Fluid)



◀EPSON Optional KAMI Fluid Holder.
(Illustrated in directions)



◀KAMI used straight to bed.
(Not recommended by EPSON)